

# ÅLAND IN FIGURES 2008

## Contents

	Page
Geographical data	1
Environment and energy	2
Population	3
Primary industries	6
Housing and construction	7
Shipping	8
Tourism	9
Transport and communications	10
Labour market	11
Map	12
Income and assets	14
National accounts	15
Enterprises	16
Prices, wages and salaries	17
Public finance	18
Health and medical care	19
Social welfare	20
Education	21
Culture	22
Justice	23
Elections	24
About Åland	Inside back of the cover

## Symbols and definitions

-	= Magnitude nil
0	= Magnitude less than half of unit employed
..	= Data not available or too uncertain for presentation
,	= Decimal separator
F	= Females
M	= Males
Rural districts	= All municipalities on Mainland Åland apart from Mariehamn
Archipelago	= Brändö, Föglö, Kumlinge Kökar, Sottunga and Vårdö
Coverdesign:	Respons Reklambyrå

## Geographical data

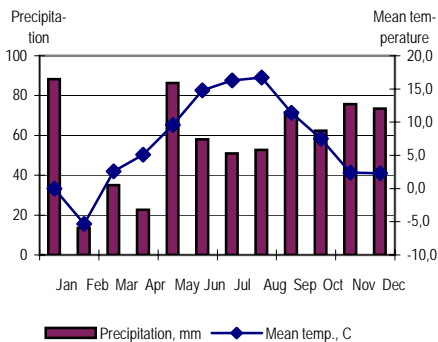
### Geography

	Islands	Lakes
> 0,25 ha	6 757	379
< 0,25 ha, ca	20 000	1 500
Inhabited islands, ca	60	
Highest point	Orrdalsklint 129 m above sea level	

### Area, km<sup>2</sup>

Total		13 517
Land		1 527
Water		11 990
Land area in % of Åland	arable	9
	pasture	4
	forest	58
	other land	29

### Weather 2007

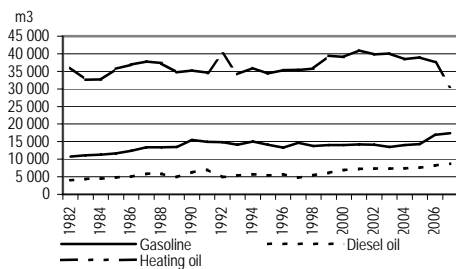


## Protected areas

	1980	1990	2000	2007
Nature reserves:				
Land, hectares	616	1 058	1 475	1 909
- % of Åland	0,4	0,7	1,0	1,3
Water, hectares	6 292	7 438	8 605	10 657
- % of Åland	1,2	1,4	1,6	0,9 <sup>1)</sup>
Natural monuments,				
number	8	9	10	10
Bird protection				
areas, number	2	5	8	9

<sup>1)</sup> Åland's water area is changed

## Consumption of oil products



## Supply of electricity, GWh

	1995	2000	2005	2007
<b>Total</b>	<b>211</b>	<b>242</b>	<b>266</b>	<b>268</b>
Imports, Sweden	123	194	225	216
Imports, Finland	9	14	18	15
Own production	79	34	23	37
- oil	78	20	4	2
- wind power	1	15	19	35

## Population

### Population 31.12

Municipality	1980	2000	2007
Brändö	550	514	510
Eckerö	685	830	923
Finström	2 052	2 299	2 457
Föglö	608	595	582
Geta	471	478	443
Hammarland	1 196	1 351	1 409
Jomala	2 615	3 328	3 774
Kumlinge	454	405	366
Kökar	304	296	284
Lemland	954	1 585	1 773
Lumparland	302	377	387
Saltvik	1 564	1 679	1 731
Sottunga	149	129	116
Sund	939	1 013	1 052
Vårdö	387	409	444
Mariehamn	9 553	10 488	10 902
Rural districts	10 778	12 940	13 949
Archipelago	2 452	2 348	2 302
<b>Åland</b>	<b>22 783</b>	<b>25 776</b>	<b>27 153</b>
Females	11 509	13 076	13 691
Males	11 274	12 700	13 362
Inh. per km <sup>2</sup>	15,4	16,9	17,8

### Population by age 31.12, %

	0-14	15-64	65+
1970	22,1	64,7	13,2
2007	17,0	65,8	17,2

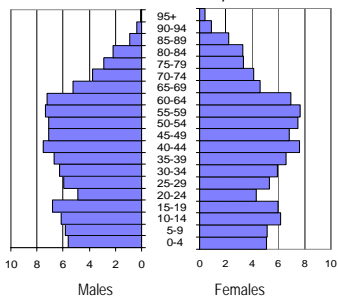
### Households 31.12

	1980	1990	2006
Households	9 037	10 335	12 175
Average size	2,50	2,36	2,18

## Population

### Population by age and sex

31.12.2007, %



### Population by country of birth, language and religion 31.12, %

	1990	2007
<b>Country of birth:</b>		
Åland	74,1	68,6
Finland	19,7	19,8
Sweden	4,0	6,9
Other countries	2,2	4,6
<b>Language:</b>		
Swedish	94,5	91,2
Finnish	4,6	5,0
Other	0,9	3,8
<b>Religion:</b>		
Luth.nat.church	94,8	87,4
Other communities	0,5	0,7
Not memb.of a comm.	4,7	11,9

### Average life expectancy

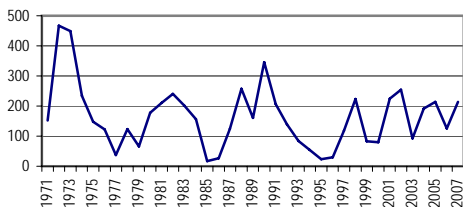
	2000-2004	2001-2005	2002-2006
<b>Total</b>	<b>80,6</b>	<b>80,6</b>	<b>80,8</b>
Females	83,7	83,6	83,5
Males	77,7	77,6	78,0

## Population

### Vital statistics

	2005	2006	2007
Births	268	295	286
Deaths	259	257	249
Excess of births	9	38	37
Immigration	844	763	850
Emigration	639	675	673
Net migration	205	88	177
<b>Increase in population</b>	<b>214</b>	<b>126</b>	<b>214</b>

### Increase in population



### Causes of death 2006

	Total	F	M
<b>Total</b>	<b>257</b>	<b>134</b>	<b>123</b>
Diseas. circ.sys.	116	61	55
Neoplasms	70	38	32
Other diseases	53	29	24
Suicide	4	2	2
Acc. and violence	14	4	10

### Immigration and emigration by country 2007

	Immi- gration	Emi- gration	Net
<b>Total</b>	<b>850</b>	<b>673</b>	<b>177</b>
Finland	278	276	2
Sweden	405	350	55
Other Nordic countries	10	20	-10
Rest of the world	157	27	130

## Primary industries

### Agricultural production 2006

Product	Tonnes	1 000 EUR
Milk	13 811	5 561
Beef	517	1 051
Mutton	59	154
Wheat	3 936	744
Barley, oats	2 961	481
Sugar beets	23 096	806
Potatoes	15 815	2 104
Onions	5 744	2 434
Chinese cabbage, head lettuce	1 647	1 388
Apples	2 156	2 808
Active farms	597	
Arable land, hectares	13 881	
-of which used for ecological prod.	2 990	

### Forestry, roundwood production 2007

	m <sup>3</sup>	1 000 EUR
Logs	66 203	2 780
Pulp	116 593	1 899

### Fishing, total catch 2007

	Tonnes	1 000 EUR
<b>Total</b>	<b>3 390</b>	<b>2 845</b>
Baltic herring, sprat	2 328	530
Whitefish	76	352
Perch	144	247
Pike-perch	28	136
Pike	28	46
Other species	786	1 534
<b>Farmed fish</b>	<b>4 156</b>	<b>14 500</b>
Number of fish farms	36	

## Housing and constructions

### Dwellings

	1990	2006
Dwellings	11 087	13 928
Type of buildings, %		
- detached	62,6	61,6
- terraced, block of flats	32,7	34,9
- other	4,7	3,5
Tenure status, %		
- owner	67,7	62,7
- rented	25,7	32,0
- other	6,6	5,3

### Dwellings completed

	2005	2006	2007 <sup>1)</sup>
Mariehamn	81	104	121
Rural district	81	92	116
Archipelago	3	8	6
<b>Åland</b>	<b>165</b>	<b>204</b>	<b>243</b>

<sup>1)</sup> Preliminary figures

### Cottages

	1990	1997
Total	8 086	8 752
Cottages	5 855	6 401
Cottages for rent	2 231	2 351

## Shipping

### The merchant fleet 2006

	Number	GT
<b>Total</b>	<b>59</b>	<b>956 604</b>
Vessels under flag of Åland and Finland	39	400 931
- car- and passenger ferries	9	234 120
- archipelago ferries	9	6 754
Vessels under other flags	20	555 673

### Arriving vessels

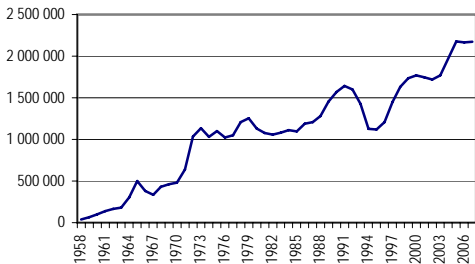
Destination	1990	1995	2000	2005	2007
<b>Total</b>	<b>4 790</b>	<b>4 444</b>	<b>8 308</b>	<b>10 003</b>	<b>9 365</b>
Mariehamn	3 975	3 414	4 831	5 834	5 402
Eckerö	815	1 030	1 169	1 227	1 228
Långnäs	..	..	2 308	2 942	2 735

### Employees on ships

	1995	2000	2005	2007
<b>Total</b>	<b>2 800</b>	<b>2 860</b>	<b>3 136</b>	<b>0</b>
Females	1 300	1 220	1 207	0
Males	1 500	1 640	1 929	0
Ålanders	750	835	685	0
Non-Ålanders	2 050	2 025	2 451	0
Passenger vessels	2 600	2 635	2 644	0
Other vessels	200	225	492	0

## Tourism

### Travellers arrived



### Accommodations

	2000	2005	2007
<b>Total</b>	<b>562 571</b>	<b>473 269</b>	<b>476 983</b>
Hotels	187 991	162 976	171 841
Guest houses	42 680	46 772	49 277
Cottages	193 438	171 887	170 948
Camping sites	138 462	91 634	84 917
<b>Home countries of the guests</b>			
Finland	251 934	181 178	183 160
Sweden	255 876	235 147	219 935
Other Nordic countries	15 873	10 464	8 065
Rest of the world incl unknown	38 888	46 480	65 823

*Note: Establishments with more than 4 rooms or cottages.*

### Marinas

	2000	2005	2007
Marinas	20	17	18
Capacity	1 396	1 212	1 227
Nights spent	30 165	28 247	29 789

## Transport and communications

### Number of vehicles

	1990	2000	2007
Cars	12 530	13 979	16 800
- cars/1 000 inh.	509	542	624
Lorries	330	403	577
Vans	2 332	2 805	3 335
Buses	40	41	43
MC:s	454	619	1 082
Tractors	3 062	3 277	3 499

### Roads, km

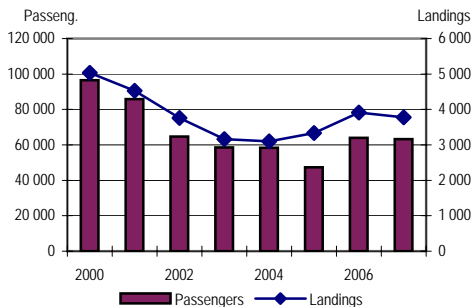
	1980	1990	2006
Public roads	888,1	895,9	916,6
- of which paved roads	307,2	534,6	773,4
Bicycle roads	..	..	54,1

### Archipelago ferries

Number of passengers and vehicles on the archipelago ferries

	1990	2000	2007
Passengers	929 659	1 048 933	1 084 967
Vehicles	441 376	525 070	562 197

### Air traffic



## Labour market

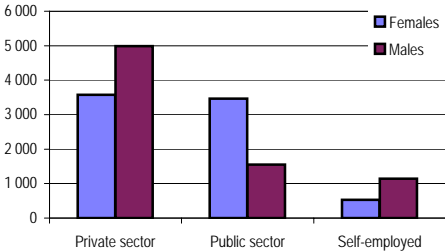
### Unemployment, %

	2004	2005	2006	2007
Total	2,3	2,3	2,2	2,1
Females	2,0	1,9	2,1	1,9
Males	2,6	2,6	2,4	2,2

### Employed persons 2005

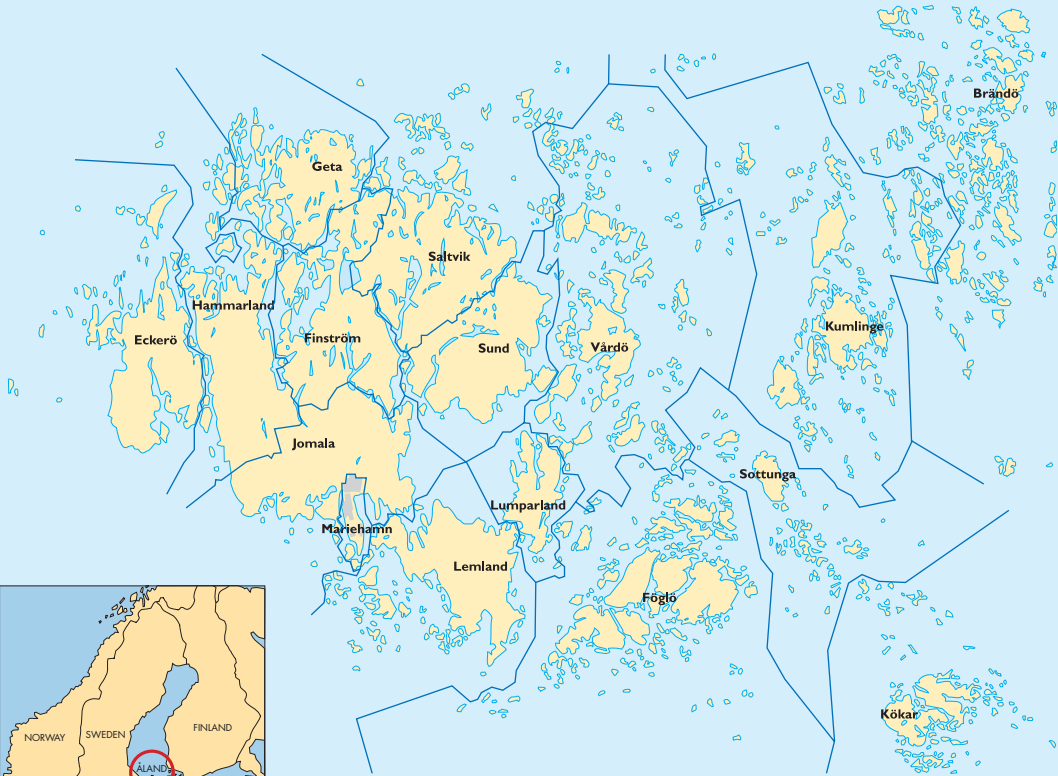
Industry	Total	F	M	%
Total	13 235	6 592	6 643	100,0
Agriculture	613	188	425	4,6
Industry	1 183	343	840	8,9
Construction	908	45	863	6,9
Trade, hotels	1 804	889	915	13,6
Transports	2 305	722	1 583	17,4
Financial serv.	1 161	597	564	8,8
Public serv.	5 060	3 713	1 347	38,2
Unknown	201	95	106	1,5

### Employed in Åland by sector and sex 2005



Note: Jobs on Åland ships are included

# Geography and Municipalities of Åland

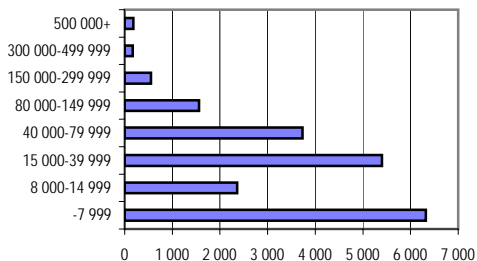


## Income and assets

### Income and assets of private individuals 2005, MEUR

	Total	Women	Men
Wages and salaries	362,6	161,1	201,5
Pensions	87,5	39,4	48,1
Business income	27,9	7,4	20,5
Capital income	107,1	27,5	79,6
Other	36,5	11,9	24,6
<b>Income subject to taxation</b>	<b>609,6</b>	<b>244,4</b>	<b>365,2</b>
Deductions in state taxation	140,4	42,6	97,8
Taxable income	469,2	201,8	267,4
Assets subject to taxation	1 063,5	362,9	700,6
Liabilities	460,3	188,5	271,8
Income and property tax	65,9	19,5	46,4
Municipality tax	61,2	25,3	35,9
Pension and social contributions	5,7	2,4	3,3
Other taxes	5,1	2,1	3,0
<b>Taxes, total</b>	<b>137,9</b>	<b>49,3</b>	<b>88,6</b>
Income subject to taxation less taxes	471,7	195,1	276,6

### Assets subject to taxation 2005, EUR

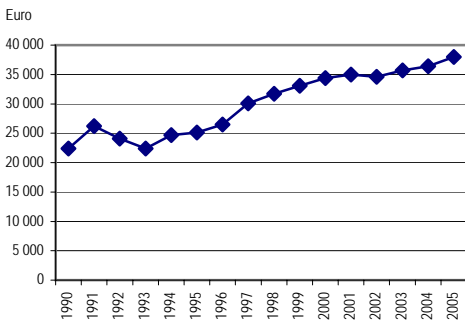


## National accounts

### Gross domestic product 2005

Industry	MEUR	%
Agriculture	21	2,2
Manufacturing	61	6,5
Construction	27	2,9
Trade, hotels	86	9,1
Shipping	264	28,1
Other transports	39	4,2
Financial services	235	25,0
Public services	31	3,3
Unallocated banking services	-24	-2,6
Industries, total	740	78,7
Government services	190	20,2
Non-profit institutions	11	1,1
<b>GDP at basic price</b>	<b>941</b>	<b>100,0</b>
Indirect taxes	126	
Subsidies	-54	
<b>GDP at market price</b>	<b>1 013</b>	

### BNP per capita, EUR



## Enterprises

### Enterprises 2006

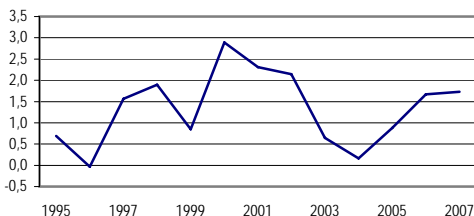
	Number of employees				
	Total	0-4	5-19	20-99	100+
<b>Total</b>	<b>2 036</b>	<b>1 797</b>	<b>175</b>	<b>51</b>	<b>13</b>
Primary ind.	85	78	7	-	-
Industry	198	164	21	11	2
Construction	388	350	30	8	-
Trade, hotel	593	519	62	11	1
Transport	202	165	20	10	7
Finance, real est.	347	316	21	8	2
Public services	223	205	14	3	1

### Turnover and profit by the industry of enterprises in industry and commerce 2006

	Turnover	Profit/Loss
Manufacture	234 173	4 156
Construction	81 819	4 967
Wholesale trade	272 689	26 095
Retail trade	159 771	3 383
Hotels and restaurants	31 830	1 258
Sea transport	723 597	63 054
Other transport	55 703	4 627
Services	119 124	13 305

## Prices, wages and salaries

### Consumer price index, annual percentage change



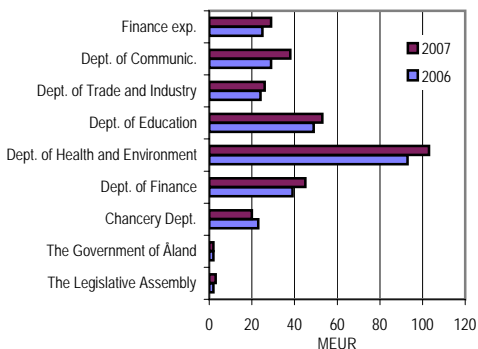
### Earnings in the private sector 2006

Occupational group	Total	F	M
<b>Total</b>	<b>2 719</b>	<b>2 314</b>	<b>2 935</b>
Legisl., senior manag.	4 456	3 540	4 600
Professionals	3 718	2 958	4 139
Techn., ass.prof.	3 145	2 705	3 468
Clerks	2 389	2 285	2 666
Serv.workers, shop and market sales w.	2 064	1 915	2 253
Skilled agriculture and fishery w	2 081	..	..
Craft and rel.trades w.	2 333	2 043	2 346
Plant, mach.op.and.ass.	2 245	1 937	2 298
Elementary occup.	1 902	..	..

### Earnings in the public sector 2006

Occupational group	Total	F	M
<b>Total</b>	<b>2 899</b>	<b>2 637</b>	<b>3 294</b>
Legisl., senior manag.	3 855	3 812	3 898
Professionals	3 560	3 232	3 901
Techn., ass.prof.	2 903	2 635	3 369
Clerks	2 121	2 150	1 869
Serv.workers, shop and market sales w.	2 444	2 444	2 445
Skilled agriculture and fishery	2 137	..	..
Craft and rel.trades w.	2 105	..	..
Plant, mach.op.and.ass.	2 638	-	2 638
Elementary occup.	2 027	1 941	2 411

## Expenditure of the Government of Åland, MEUR



## Finances of the municipalities 2006

	MEUR	%
<b>Expenditure by sector</b>	<b>149</b>	<b>100,0</b>
General administration	8	5,6
Social welfare	55	37,1
Education and culture	40	27,1
Other services	45	30,2
<b>Comparative figures</b>		
Tax-unit/inh. (2005)		15 965
Taxation (2006)		16,78
Long term liabilities, EUR/inh. (2006)		2 168

*Health and medical care***Health and medical care**

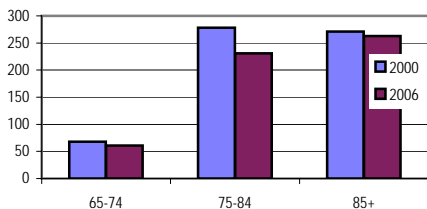
	2006	2007
Ålands centralsjukhus/General hospital of Åland		
Beds	106	106
Patient days	22 017	20 984
Doctor consultations	63 851	66 825
Grelsby sjukhus/Mental hospital		
Beds	32	23
Patient days	5 547	4 680
Mental health clinics		
Visits	16 010	17 068
Primary care		
Visits at health care center	106 905	101 797
House calls	27 150	27 260
Chronic Ward		
Beds	97	97
Patient days	32 946	31 224

## Social welfare

### Child day care

	2000	2006
Day nurseries	47	43
Children	1 518	1 409
In day nurseries	1 291	1 282
In family day care	227	127
Percentage of children in child day care	59,9	60,5
0-1år	9,5	8,8
2-3 år	57,1	58,5
4-6 år	90,5	96,5

### Clients receiving municipal home-help services by age



### Geriatric care

	2005	2006	2007
Beds	150	150	150
Patient days	51 570	49 091	50 019

### Pension beneficiaries

	1995	2000	2006
Pension beneficiaries, total	5 043	5 766	6 206
- old-age pension	4 085	4 504	4 816
- invalidity pension	650	820	859

## Education

### Comprehensive schools 2007

	Schools	Pupils
<b>Total</b>	<b>25</b>	<b>2 947</b>
Comprehensive schools	24	1 901
Upper stage schools	9	1 046

*Note: Eight schools have both comprehensive and upper stage education*

### Students after comprehensive schools 2007

	Total	F	M
<b>Total</b>	<b>1 290</b>	<b>668</b>	<b>622</b>
Prep.study progr.	478	276	202
Vocational progr.	764	367	397
Other	48	25	23

### Students at the Åland Polytechnic autumn 2007

	Total	F	M
<b>Total</b>	<b>376</b>	<b>142</b>	<b>234</b>
Business and politics	59	44	15
Technology	123	5	118
Health and welfare	47	41	6
Services	147	52	95

### Students from Åland 2007

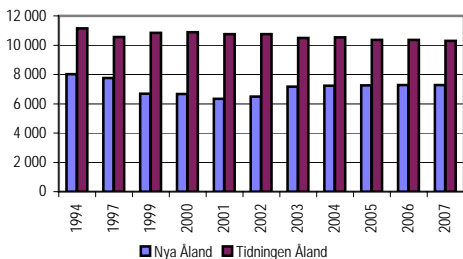
Location	Total	F	M
<b>Total</b>	<b>1 169</b>	<b>710</b>	<b>459</b>
Finland	250	145	105
Sweden	870	526	344
Other	49	39	10

## Culture

### Libraries

	2005	2006	2007
Holdings of media	320 723	331 807	318 619
Home loans	473 902	466 227	457 139
Volumes lent/inh.	17,7	17,3	16,8

### Daily newspapers, circulation



### Museums, visits

	1995	2007
Åland Museum	26 861	27 771
Åland Maritime Museum	27 156	17 733
The Museum ship Pommern	37 676	33 302
Kastelholms castle	25 350	35 586
Vita Björn	25 600	12 996
Åland Hunting and Fishing M.	18 760	12 100

### Parishes

	2002	2006
Number of parishes	13	10
Members of parishes	23 949	23 755
Attendants in services	59 841	51 661
Baptisms, number	253	242
People in preparation for confirmation, number	261	303

*Note: Evangelic-Lutheran national parishes*

## Offences known to the police 2006

	Offences total	Suspected persons		
		Total	F, %	M, %
<b>All offences</b>	<b>3 550</b>	<b>2 572</b>	<b>19,1</b>	<b>80,9</b>
Property offences	1 062	258	18,6	81,4
Offences ag. persons	206	215	10,2	89,8
Sexual offences	12	12	-	100,0
Public offences	56	56	10,7	89,3
Traffic offences	1 136	1 053	19,6	80,4
Off. ag. alcohol law	37	33	33,3	66,7
Traffic incidents	712	643	23,6	76,4

## Åland General Court of first instance

Cases settled	2000	2005	2006
<b>Total</b>	<b>5 659</b>	<b>4 501</b>	<b>4 628</b>
Criminal cases	258	341	367
Regular proceedings	537	688	716
Bankruptcies	18	5	5
Petitions and registrations	4 846	3 467	3 540
- divorces	60	58	80
- confirmations of real estate	1 099	1 168	1 088
- real estate mortgages	3 360	2 098	2 225
- other	327	143	147

## *Elections*

### **Elections to the legislative assembly 21.10.2007**

	<b>Total</b>	<b>F</b>	<b>M</b>
Entitled to vote	<b>19 418</b>	9 856	9 562
Number of voters	<b>13 166</b>	6 875	6 291
Participation, %	<b>67,8</b>	69,8	65,8

#### **Result**

Political group	Votes		Members elected		
	Number	%	Tot.	F	M
<b>Total</b>	<b>12 825</b>	<b>100,0</b>	<b>30</b>	<b>10</b>	<b>20</b>
Åland Liberals	4 176	32,6	10	3	7
Åland Centre Party	3 107	24,2	8	3	5
The Moderates	1 233	9,6	3	-	3
Åland Soc.Dem.Party	1 513	11,8	3	3	-
Independents	1 573	12,3	4	1	3
Future of Åland	1 070	8,3	2	-	2
HUT-gruppen	153	1,2	-	-	-

Speaker Roger Nordlund (Centre Party)

### **The Government of Åland 2008-**

	Members	F	M
<b>Total</b>	<b>7</b>	<b>3</b>	<b>4</b>
Åland Liberals	4	2	2
Åland Centre Party	3	1	2
Premier Viveka Eriksson (Åland Liberals)			

### **EU referendum for Åland 20.11.1994, per cent**

Participation	49,1
Yes-votes	73,6
No-votes	26,4

## About Åland

Åland is a home-ruled, demilitarized and Swedish speaking territory that belongs to Finland. The Ålanders have competence to make their own laws regarding health- and medical services, internal communications, education, culture and ancient monument preservation, industry, the police, the postal service, radio and television and the local administration. The legislative assembly of Åland (Lagtinget) also appoints the executive power of Åland (Landskapsregeringen/The Government of Åland).

Åland received its own flag in 1954 and its own stamps in 1984.

Since 1970, Åland has its own representation in the Nordic Council. The Government of Åland also participates in the work of the Nordic Council of Ministers.

Åland joined the European Union in 1995, but stands outside the EU tax union.

